

Optical Fiber Distribution Frame



OPTiLite optical fiber distribution frame OFDF82-1-2 is made of top quality steel and deformed aluminum alloy and treated with galvanizing, oxidation and electrostatic plastic spraying. The frame has solid structure and pleasing appearance.

FEATURES:

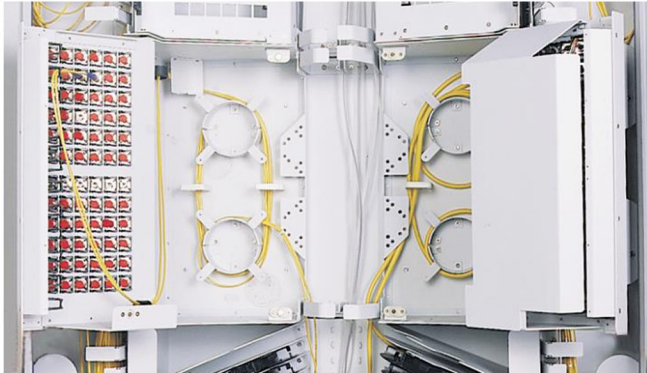
- This frame is made of top quality steel and deformed aluminum alloy and treated with galvanizing, oxidation and electrostatic plastic spraying. The frame has solid structure and pleasing appearance.
- Fully-closed structure with the advantages of good performance of dust-proof, pleasing and neat appearance.
- Enough space for fiber distribution and storage space and very easy for installation and operations.
- Fully front side operation, convenient for maintenances.
- Splice and distribution are separated and spread uniformly on the top and bottom sides of the frame. Compact structure and distinct layer for convenient management.
- Frisbee style (UFO style) splice tray is adopted; up to 48 trays can be hold in one frame.
- Curvature radius of 40mm.
- This frame is suitable for both common bundle cables and ribbon type cables.
- Reliable cable fixture cover and earth protection device provided

DIMENSIONS & CAPABILITY

Dimensions(H*W*D)	Modules	Capacity (FC/SC)
2600*900*300	8	576
2200*900*300	6	432
2000*900*300	4	288

OPTiLite Fibre Optic

OPTiLite
fibre optic products LiteUK



OPERATION CONDITIONS

Temperature	-5°C to - 60°C
Humidity	90% at 30°C
Air Pressure	70kPa – 106kPa

SHIPPING INFORMATION

Package Contents	ODF 1 unit
Package Dimensions(W*H*D)	It depends on the dimensions of the product
Material	wooden box
Weight	It depends on the dimensions of the product
Lead Time	10-15 working days normally

OPTIONAL ELEMENTS:

- Hardware to fasteners, and fastening to the number of fiber needed can be offered on request.
- Elements to protect buffers depending on the number of cables needed can be offered on request.
- Accessories such as screws, nut, fasteners for raiser floor or concrete floor can be offered on request.
- Customer's logo can be printed on the upper left corner or upper right corner of the frame on request.